

The ELF: national, regional and institutional services

JISC Common Services Meeting, London, 26/10/2004

Wilbert Kraan, CETIS

Overview

- ELF developments to date
- The Frameworks model
- Views on the ELF
- Coherence
- National, regional and institutional services
- Common and Shared Services

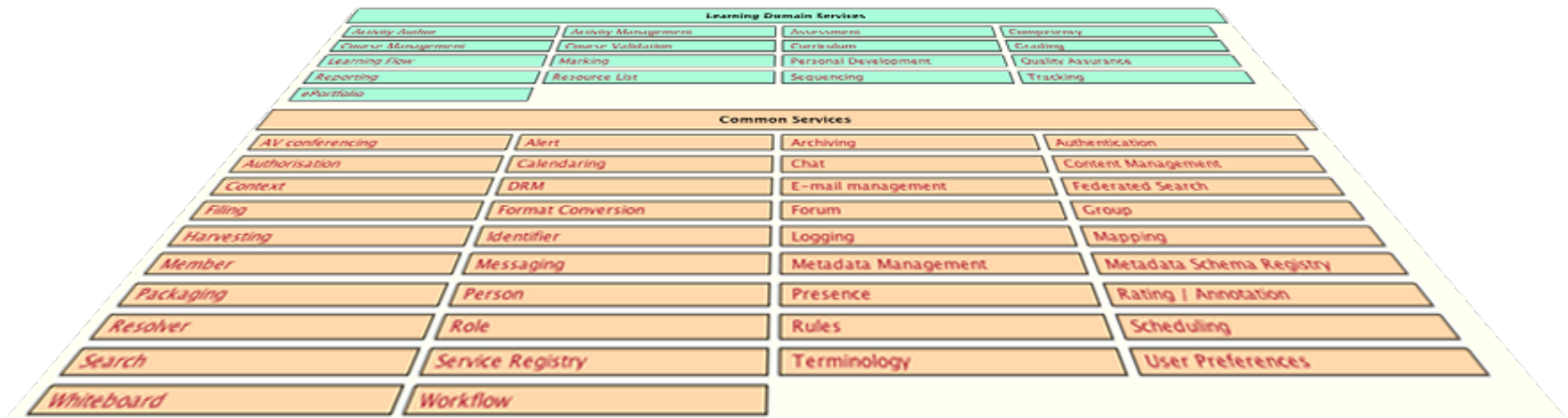
ELF developments to date

Started as a co-ordination of development strategy between DEST, JISC/CETIS and Industry Canada

- first cut early 2004: identifying functionality
- second cut May 2004: re-factorisation
 - integrating IE services
 - lessons learned from the LeAP soa
 - lifting the pure e-learning services from the rest
- 7 JISC E-learning tool strand projects
- 22 JISC DEL projects
- DEST MAMS A&A reference model project
- DEST/Carnegie Mellon LSAL repository work starting

The Frameworks model

ELF is a decision making tool:



Reference Model → Specs & standards

Design → UML model of implementation

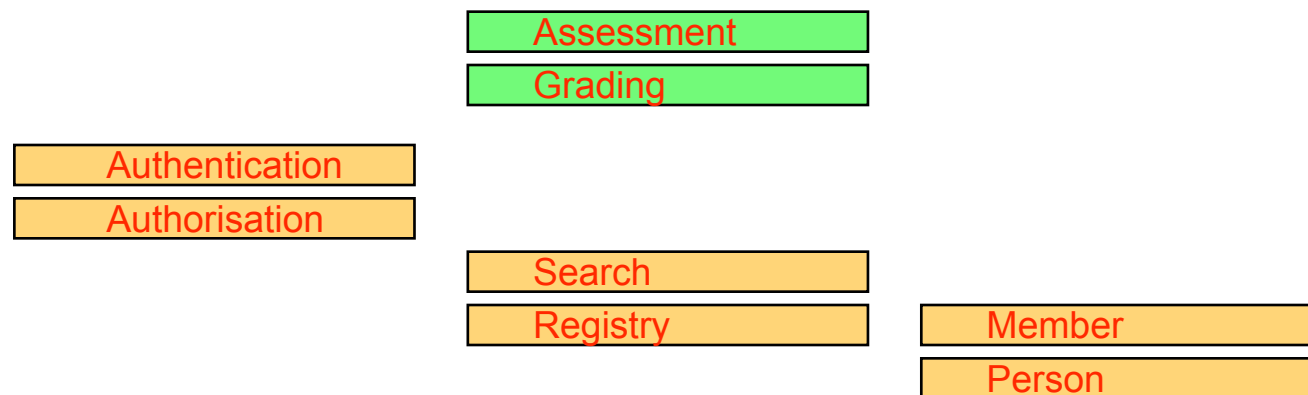
Artefact → Running code



Views on the ELF

There are very large amounts of possible perspectives on ELF

– e.g. e-learning activity



Views on the ELF

There are very large amounts of possible perspectives on ELF

– e.g. application cluster:

Presence

Chat

Context

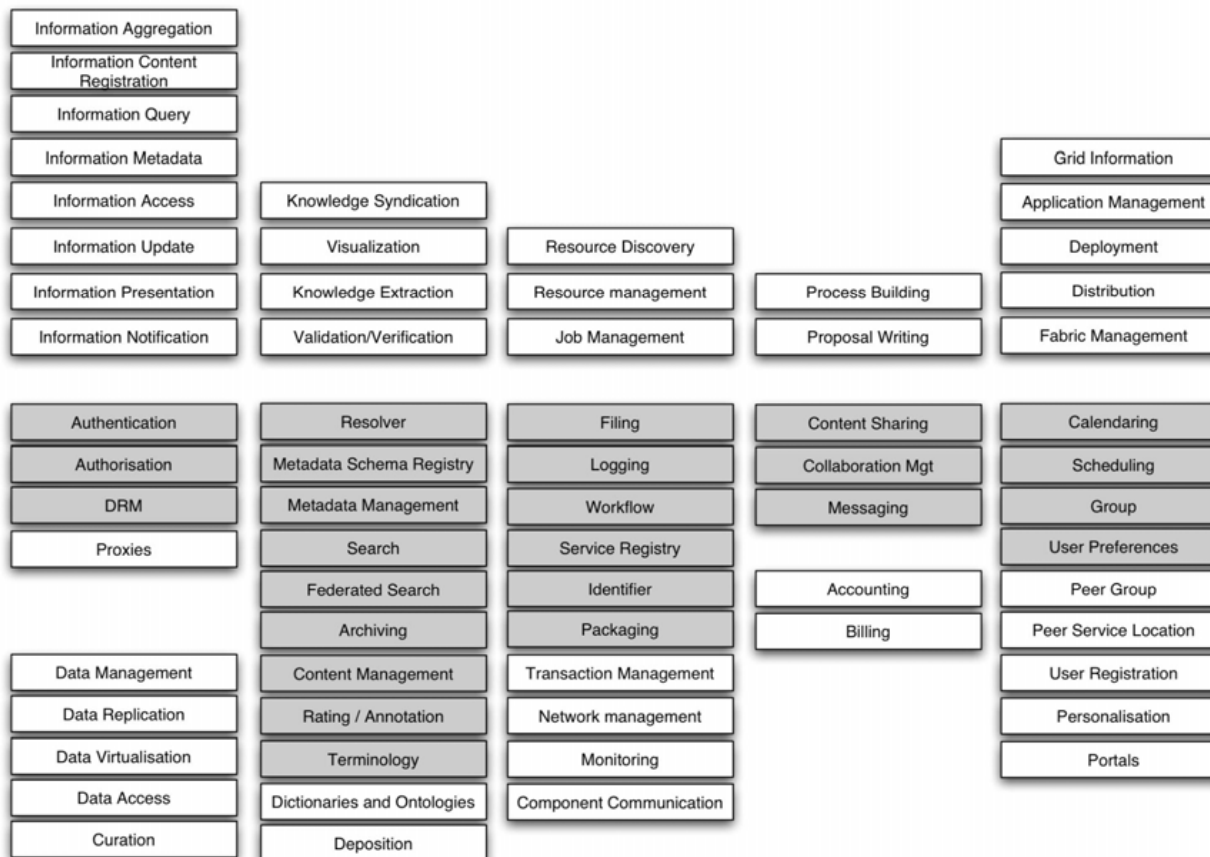
AV Conferencing

Whiteboard

Views on the ELF

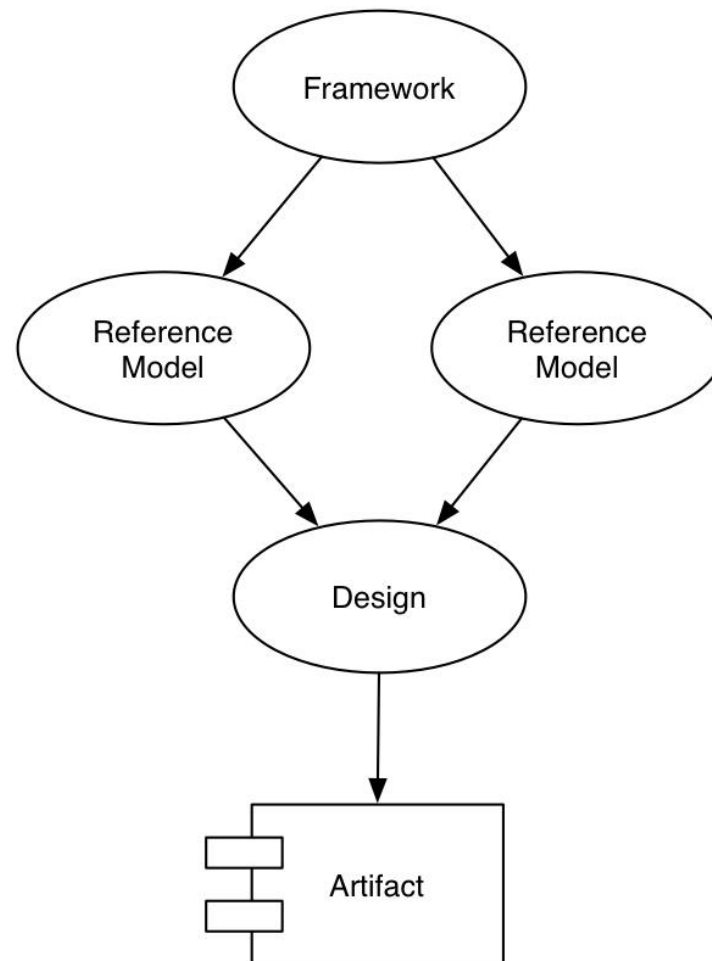
There are very large amounts of possible perspectives on ELF

- e.g. overlap with other frameworks (e.g. JCSR):



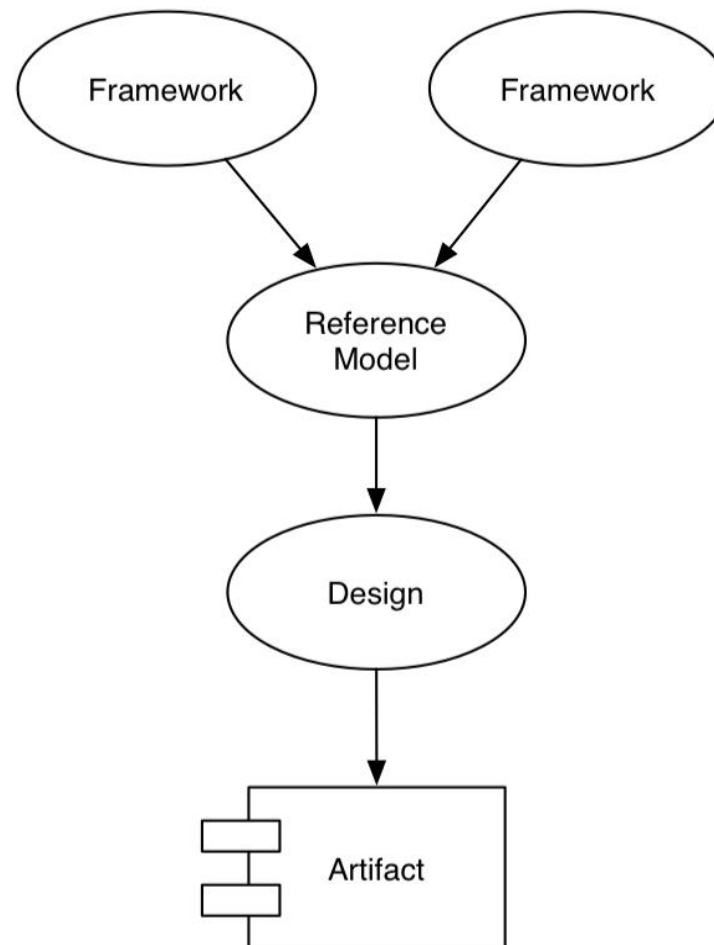
Coherence

Accommodating multiple reference models in ELF:



Coherence

Accommodating a single design in multiple frameworks:



National, regional and institutional services

Technically, it doesn't matter where webservice providers are

- designed to cross firewalls
- has been used for integration over the local loop as well as globally, and anything inbetween

Culturally and politically, it does matter where services are

- but there's no neat mapping of services to geographic levels:
 - e.g. collections of digital assets from desktop to global repository

Common and Shared Services

Shared services

- Consumed by everyone
- Provided by some
- Remit of one group for specs and standards
- e.g. metadata registry

Common services

- Consumed and provided by everyone (eventually)
- Fabric services that manage the integrity of the network
- Remit?
- e.g. workflow