



# Assis - Assessment and Sequencing

Robert Sherratt  
eServices Integration Group  
The University of Hull

Steve Jeyes  
Edexcel



THE UNIVERSITY OF HULL

# Assis

- Partnership between
  - Icodeon
  - Strathclyde
  - Stanford
  - Loughborough
  - Hull



# Pedagogic drivers

- Facilitating next generation content and learning experiences
- Moving towards active/explorative and games-based learning
- Innovative paths and adaptive learning experiences require the integration of assessment with sequencing



# Architecture

- Service Oriented Architecture in action
- Integrate discrete services
- WS orchestration standards
  - BPELWS
- enables the creation of new tools from JISC eLearning web services

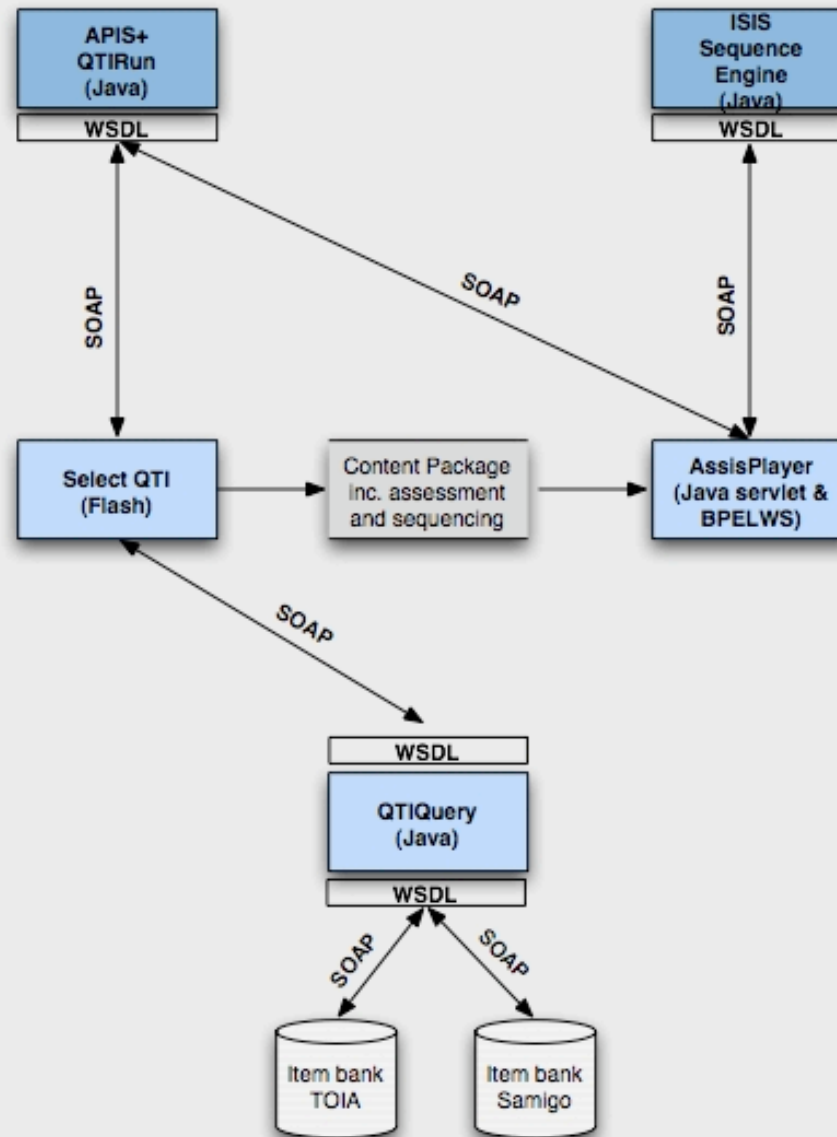


# Technology

- WSDL, SOAP, BPELWS
- Apache Axis, ActiveBPEL
- Java
- Tomcat, servlets
- Flash
  - rapid interface design, WSDL integration
- Eclipse
  - BPEL plugin



# Assis systems



ASSIS | Player - Icodeon

File Edit View Favorites Tools Help

Address <http://localhost:8080/assis/player.do> Go

**JISC** The Joint Information Systems Committee

ASSIS QTI and Sequencing Player Packages Sequencer

**Boolean OR Connector** << Previous Continue >>

You are interested in finding the works of both Shakespeare and Marlowe - your search term is:

Shakespeare OR Marlowe

Shakespeare AND Marlowe

Shakespeare NOT Marlowe

That is incorrect. Using the AND connector retrieves only those articles containing both keywords.

Resources

Resources:

Type: imsqti\_xmlv2p0

QTI Score: 0.0

Messages:

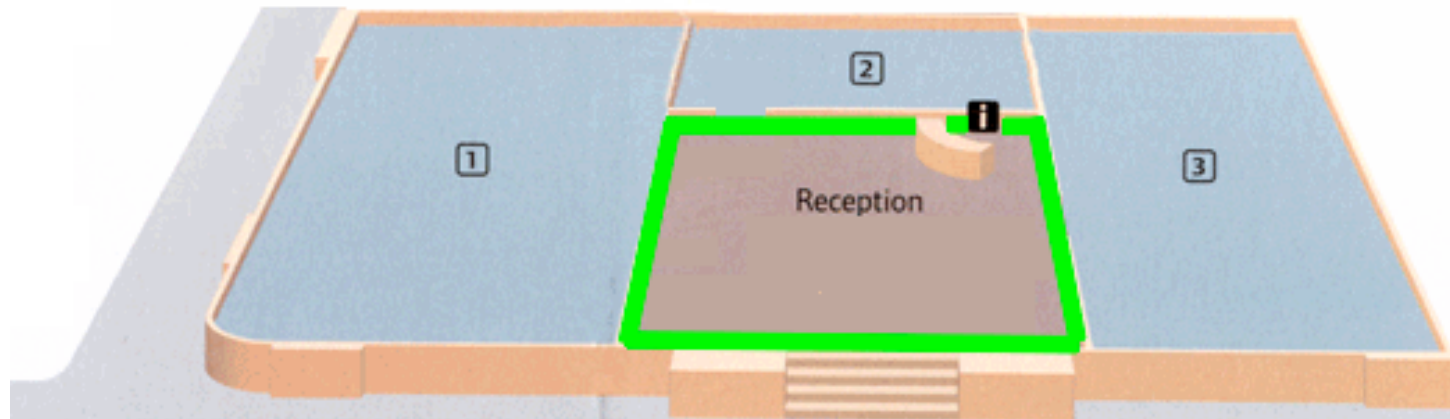
Item ID: ITEM-BB9F3230-6FEB-4F28-1B2F-8D0C3C60B158

JISC eLearning Framework

<http://www.scormtech.com/assis/>

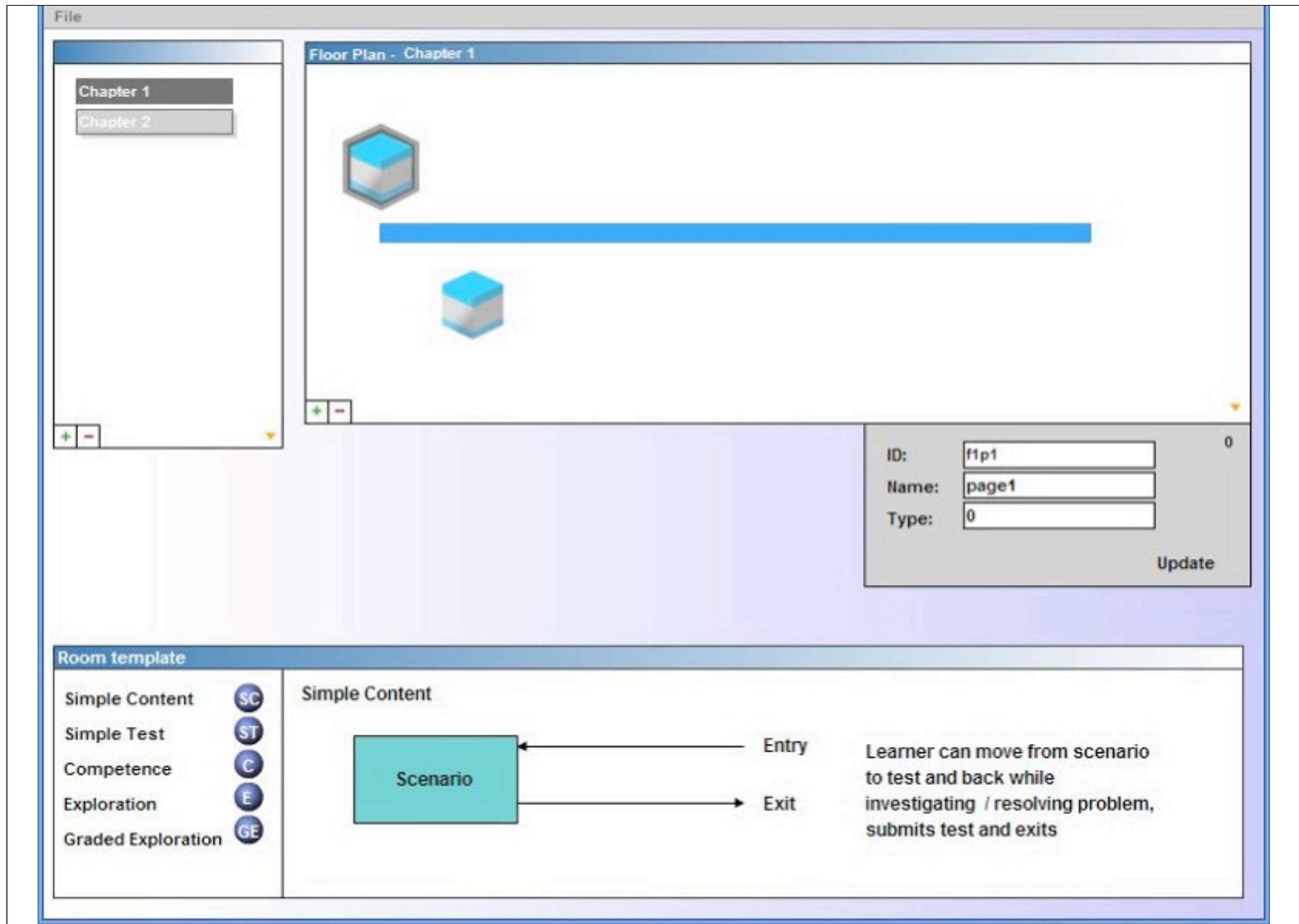
# Pedagogic framework

## Floor-Corridor-Room



THE UNIVERSITY OF HULL





Prototype authoring tool

# Continuation

- MakingTracks (Mar-Sep 05)
  - building Maths learning trails
  - Icodeon, Cambridge
- FREMA (Apr 05 - Apr 06)
  - Assessment reference model and exemplar deployment
  - exploring orchestration from GRID and ELF experience
  - Southampton, Strathclyde



- Outcomes available at:

[http://www.hull.ac.uk/esig/assis\\_deliverables.html](http://www.hull.ac.uk/esig/assis_deliverables.html)

- [r.sherratt@hull.ac.uk](mailto:r.sherratt@hull.ac.uk)
- [steve.jeyes@edexcel.org.uk](mailto:steve.jeyes@edexcel.org.uk)

