

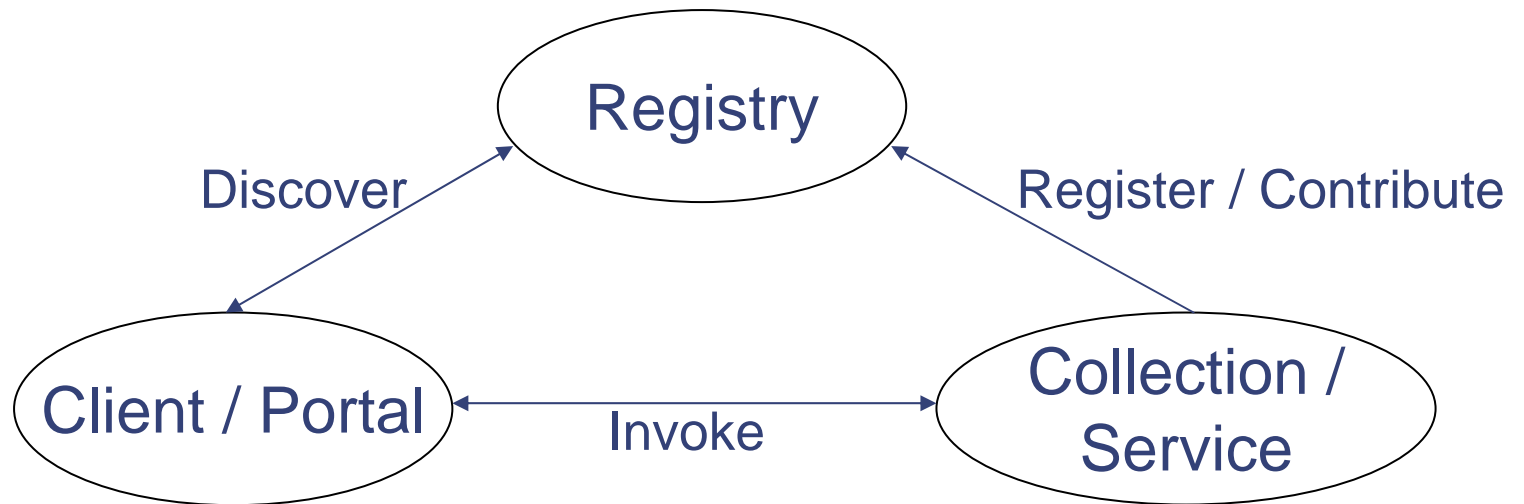
IESR: What's the Use?



Ann Apps
MIMAS,
The University of Manchester, UK



Service Registry Use



Use Case Types



- <http://iesr.ac.uk/use/use-cases/>
- Dynamic
- Harvest into Local Registry
 - Effectively dynamic
- Static by portal builder
- By a person
- By a service application
- Contribute by Editor or Harvest

Metasearch Portal Scenario



- Physicist, Mary: literature survey about Higgs-Boson particle
- Portal discovers bibliographic collections about particle physics with Z39.50
 - Vocabulary service needed
- Portal provides to Mary result of Z39.50 cross-search using 'Higgs-Boson' in 'title' to Mary

Use Issues



- Use Cases mostly theoretical
- Are we ahead of our time?
- Will increased content encourage use?
- Can we improve data input to encourage contribution?
- Are perceptions of data persistence and currency a problem?

Benefits of IESR



- Single, shared collection description
- Portal builder doesn't need to know about all resources
- Resources come 'online' as registered
- End users:
 - Portal is single place for discovery
 - Discover collections unaware of

Thank You! Questions?

<http://iesr.ac.uk/>

ann.apps@manchester.ac.uk