

JISC

JISC Programme Meeting 4-5 July 2007

Repositories and Preservation Programme 2006-2009





The JISC Repositories and Programme Context

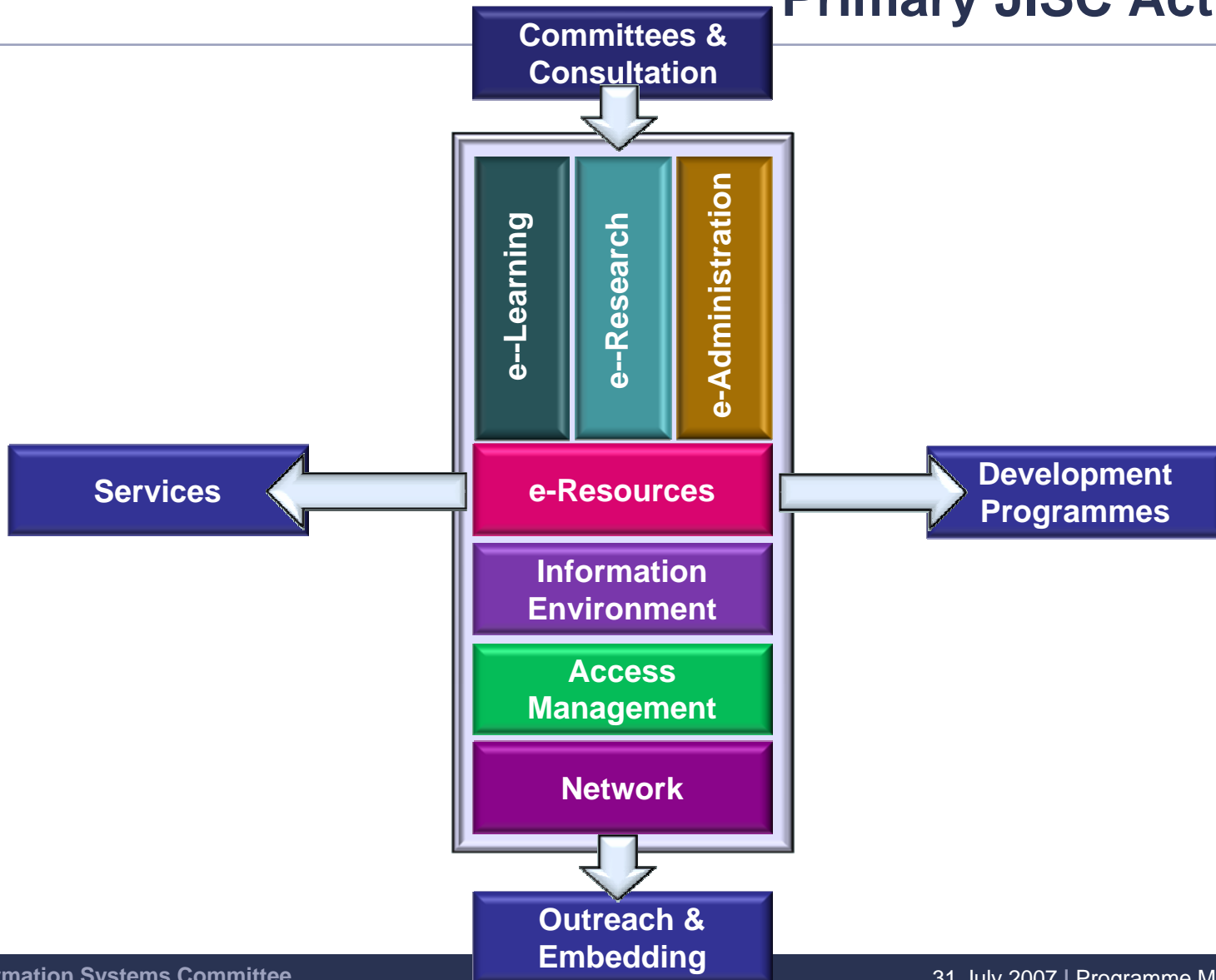
Rachel Bruce

Programme Director – Information Environment

r.bruce@jisc.ac.uk , 0203 006 6061

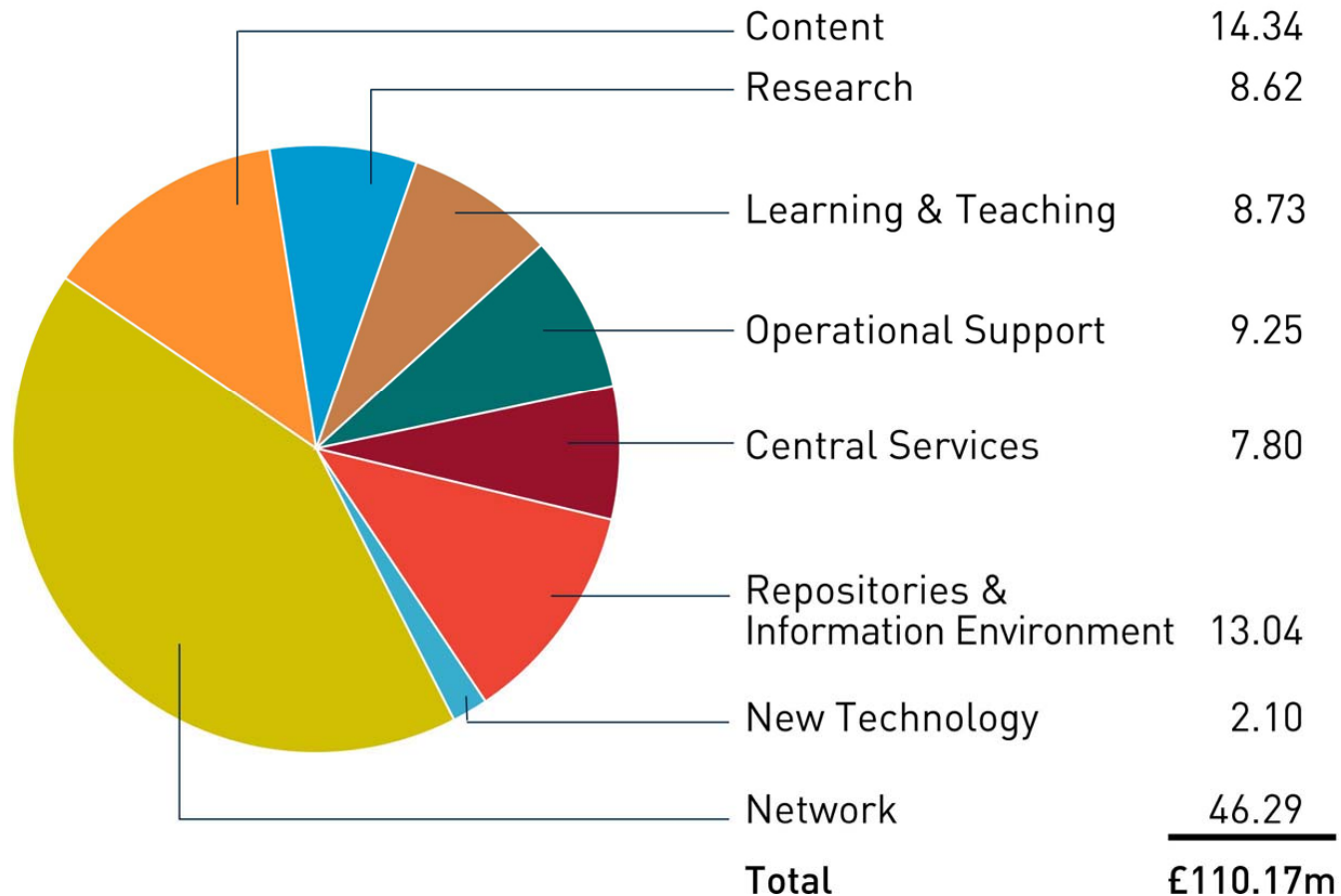
- “JISC's mission is to provide world-class leadership in the innovative use of Information and Communications Technology to support education and research.”
- JISC receives top-sliced, proportional funding from UK's funding councils.
- Funds ICT infrastructure (JANET), services (e.g. TASI, JISCInfonet, JISCLegal, TechDis), and projects (e.g. digitisation programme, preservation and repositories, users and innovation)
- c.80 staff, at Bristol and London. Wider committee and working group structure drawn from relevant communities
- Orientated to HE, then FE, then broader public

Primary JISC Activities



JISC Predicted Expenditure 2007-08

JISC Expenditure 2007/08



Digital Repositories Roadmap: Looking Forward

–a vision for 2010 in which a **high percentage of newly published UK scholarly output is made available on an open access basis** and in which there is a **growing recognition of the benefits of making research data, learning resources and other academic content freely available for re-use**. Furthermore, geospatial information and other data through improved licensing. Achieving this vision over a four-year period will not be easy, but it is intentionally set as a challenging aim in order to help focus discussion on what needs to happen to make it a reality

Not just OA – different levels of access

–while the current technical infrastructure in the UK is in need of some development, it is **primarily in the areas of policy (both institutional), culture and working practices that have been made**

Technology can help cultural change

http://www.jisc.ac.uk/whatwedo/programmes/programme_rep/keydocs.aspx

- Technical development...
 - **Repositories Research Team**
- Set up repositories, manage and share content:
 - **Repository Support Project**
- In the meantime...
 - **The Depot**
- Find content
 - **Intute Repository Search**



- **Tools and Innovation:** 13 projects
- **Discovery to Delivery:** 12 projects
- **Digital Preservation:** 5 Projects (couple of tools and innovation too)
- **Shared Infrastructure Services:** 8 Projects
- **Start up and Enhancement projects (SUE):** 25

(Total projects currently: 67)

- Proposals being marked at the moment:

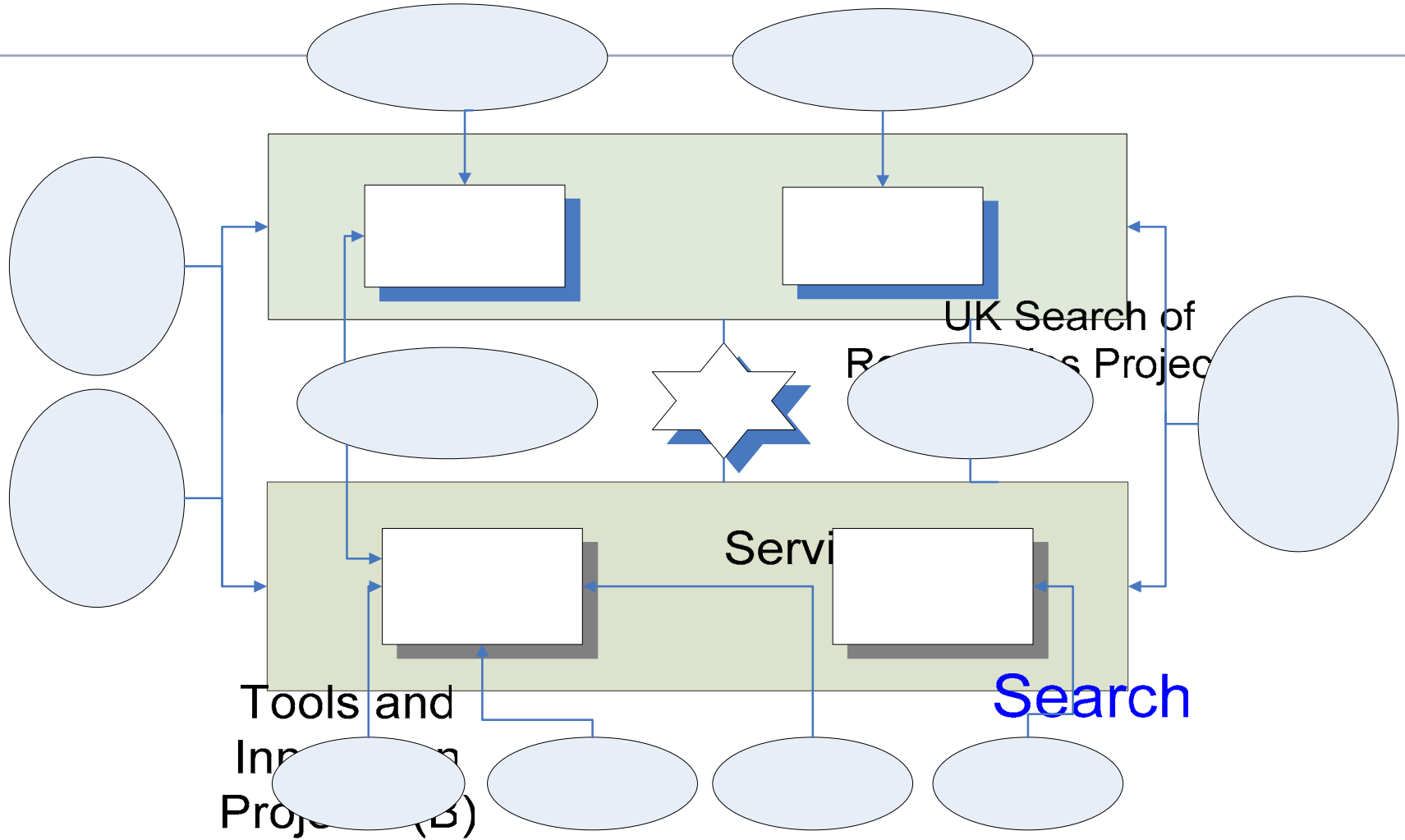
Interoperability demonstrators, SUE, Digital Preservation

- Scoping work: Shared Infrastructure Services, discovery to delivery

- £15M , April 2006 – March 2009.

- Programme Managers:

- **Andrew McGregor:** SUE, RSP;
- **Phil Vaughan:** Tools and Innovation (and JORUM);
- **Balviar Notay:** Discovery to Delivery, Intute Search (and Resource Discovery);
- **Neil Jacobs:** Depot, EthosNet (and lots of other repository work);
- **Leona Carpenter:** (temporarily) Digital Preservation (and DCC, LOCKSS, e-Journal archiving etc.)



http://www.jisc.ac.uk/whatwedo/programmes/programme_rep_pres.aspx

Summary of Programme Aims

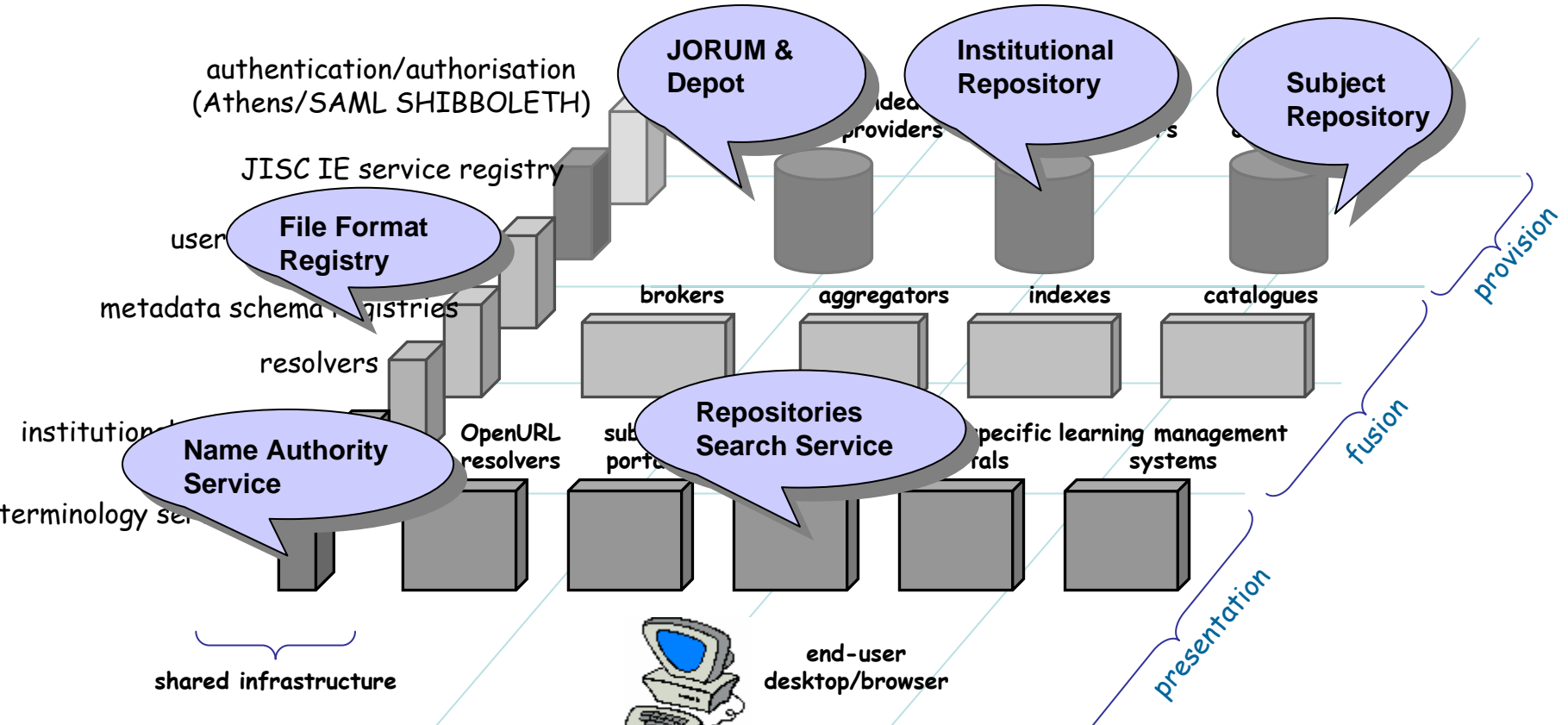
- Further **develop and populate institutional repositories** (and subject repositories where appropriate) – contribute to a critical mass
- Develop and provide shared practice and policies to **enhance skills for content use and sharing**
- **Build a rich search infrastructure** for research and learning assets from institutions
- **Refine standards and specifications** for digital repositories and preservation – improve **interoperability, accessibility and longevity**
- Improve and define an **infrastructure for the stewardship and use** of resources
- Develop ways to **embed content in the research, learning and administrative** processes in universities and colleges
- **Make scholarly communication more effective** – enrich research and learning

Creating digital repositories that are ...

- **Standards based:** employ and develop standards for digital capture and description, and digital preservation
- **Interoperable:** deploy the standards specified within the JISC Information Environment for interoperability and offer excellence in resource discovery
- **User Focussed:** have been created with a high level of user engagement, offer a high quality user experience, and where users have been actively engaged in the design of interfaces and delivery mechanisms
- **Innovative:** explore new approaches and embrace current developments in technology
- **Sustainable:** where suitable service provision and business models can be put in place to ensure future sustainability and preservation; institutional policies and commitment
- **Legal:** where rights including copyright have been cleared for educational use, re-use and deposit in archives or repositories etc.

Why a Programme?

- Ability to enthuse, cajole, enforce, aims of wider strategy
- The whole is greater than the sum of its parts— shared assets, shared metadata, developing critical mass of material, shared infrastructure, joining it all up!
- Identify common interests, challenges and goals
 - Web2.0 / user generated content – what does that mean for the institution and the Information Environment?
 - Improved interoperability – how?
 - Work in global environment – DRIVER, OAI-ORE
 - Encourage deposit – what are the ways?
 - Sharing data – what are the IPR frameworks that are required?
- Sharing – building communities – building on previous work



The Information Environment and Repositories and Preservation
Original Architecture by Andy Powell, UKOLN, 2003

Describe collections & services
Using the IESR schema

OAI PMH repository
Dublin Core – OAI-PMH-DC XML/
UK LOM CORE- Dig Repos. Spec.

authentication/authorisation
(Athens/SAML)
JISC IE service registry

user preferences services

metadata schema registries

resolvers

institutional preferences
services

terminology services

shared infrastructure

JISC-funded
content providers

institutional
content providers

external
content providers

brokers

aggregators

OpenURL
resolvers

subject
portals

institutional
portals

media-specific learning management
systems

end-user
desktop/browser

IMS content packaging,
or METS

Assign persistent URI's

Harvest using OAI PMH
version 2.0

Top Tips- from Alistair Dunning at JISC

- Creating metadata takes longer than you think
- As does copyright clearance
- Expose as much metadata and content as you can, without authentication
- Think about your URL policy and then stick to it
- Temporal and spatial metadata are very user-friendly
- Metadata takes a lot longer than data capture
- Don't reinvent the wheel, for either big or small things
- Make sure you have IT infrastructure for processing, QA and storage
- Good documentation provides extra guarantees for users and funders
- Staff are your most important resource
- The end-user is nearly always right
- You can only protect what you can police

Relevant to some, not all projects

Developing a knowledge base

E-Framework

Open standards based interfaces,
defining use and interfaces

Service Orientated Architecture