

Appraisal of Data as a Precursor to Digital Curation

John Faundeen

U.S. Geological Survey

Center for Earth Resources Observation & Science

5 July 2007

Joint Information Systems Committee

Outline

- 👉 Background
- 👉 Context
- 👉 Need
- 👉 Appraisal
- 👉 Appraisal Process
- 👉 Results
- 👉 Summary

Background



👉 President

👉 Department of the Interior

👉 U.S. Geological Survey

👉 Geology

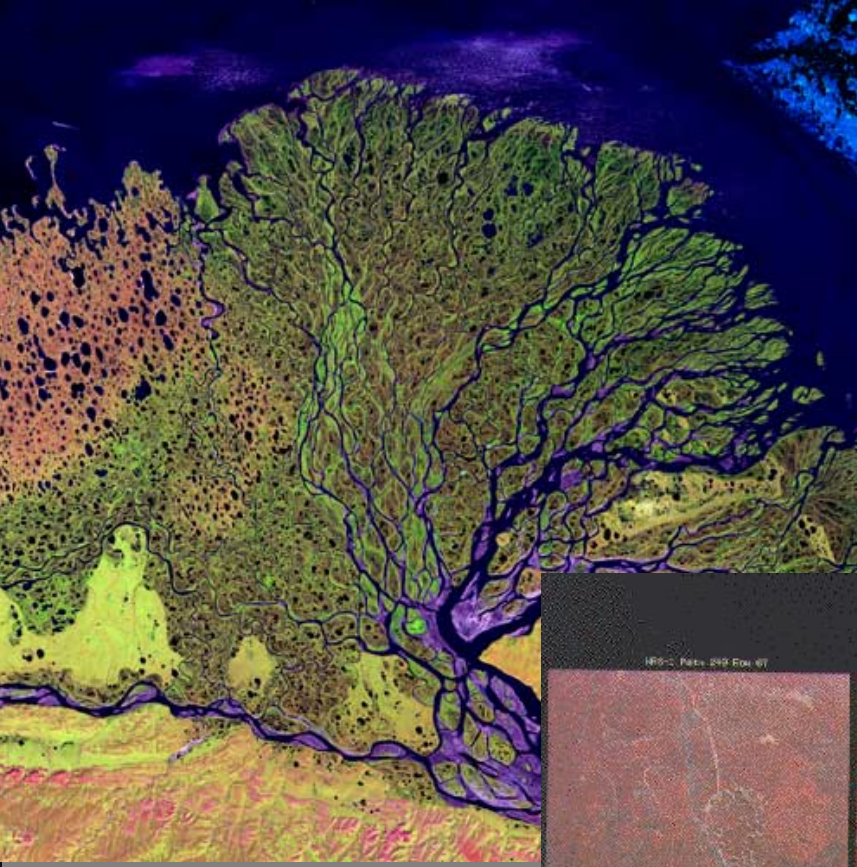
👉 Hydrology

👉 Biology

👉 Geography

👉 Center for Earth Resources Observation & Science

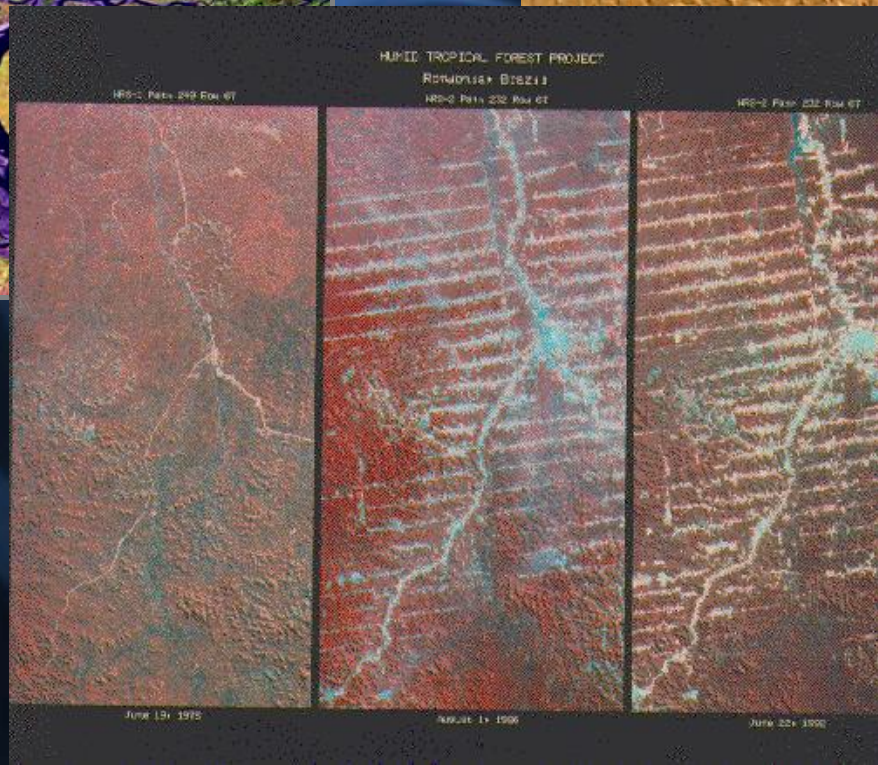
👉 Research and Long-Term Archive of Remotely Sensed Land Data Mission



Lena Delta



Namib Desert



Brazil



Context

- 👉 3 Petabytes
 - 👉 1970s to Current
 - 👉 1 New Terabyte/Day
- 👉 110,000 Film Rolls
 - 👉 1930s to Current
- 👉 Public Domain
 - 👉 Minus French SPOT



Need

👉 Why Curate?

👉 Scientific, Cultural, Technical Legacy

👉 Law

👉 Current State

👉 Discussions on Access Moot

Appraisal

- 👉 Why Bother - Just Curate Everything
- 👉 We Intuitively Know the Value
- 👉 Subjective
 - 👉 Open to Criticism
- 👉 Time-Consuming
 - 👉 Costly
- 👉 E-Records Cheap to Maintain Today

Appraisal

👉 Rationale Supporting

- 👉 Can Not Curate Everything - Must Accept This
- 👉 IT is Cheap[er] - Costs are Relative
- 👉 Declining Budgets
 - 👉 Proper Allocation / Priorities May Have to be Made
- 👉 Confirm Programmatic Relevance
 - 👉 Missions Evolve & Re-Organizations Occur
 - 👉 Legacy Data May not Match Mission
- 👉 U.S. Congress Not Interested in Volume Charts
- 👉 Documenting Decisions (Deals Made?)
- 👉 Constant Offers

Appraisal

n. ~ 1. The **process** of determining if materials have sufficient **value** to be accessioned into a repository. - 2. The **process** of determining the **length of time records should be retained**, based on legal requirements and on their current and potential **usefulness**. - 3. **Determining the market value** of an item; monetary appraisal.

"A Glossary of Archival and Records Terminology," Society of American Archivists 2004.

- 👉 Establishing Value is Subjective, but Worthwhile
- 👉 Archivists Not Comfortable With, Need to be
- 👉 Could be Used as a Curation Priority Tool

Appraisal Process Steps

👉 Initial Request to Archivist

👉 Single Point-of-Contact

👉 Coordinates the Entire Process

👉 Facilitates Between:

👉 Archive Staff

👉 Scientists

👉 Senior Managers

👉 Requestor

👉 Could be Outside Entity, Internal Scientist, Management

Appraisal Process Steps

- 👉 Team Composed
 - 👉 Available Archive Staff
 - 👉 Relevant Scientists
 - 👉 **Key**
 - 👉 Archivist
 - 👉 Project Lead
 - 👉 Outside Point-of-Contact (if involved)

Appraisal Process Steps

👉 Collecting “Facts”

👉 Counter Subjective Nature of Appraisals

👉 Provenance

👉 Physical Condition

👉 IP Elements

👉 Intellectual Control

Appraisal Process Steps

- 👉 Science Input
 - 👉 Most Difficult Step
 - 👉 *Keep Everything, Forever*
 - 👉 Pertinent Scientists
 - 👉 Time-Permitting
- 👉 Required

Appraisal Process Steps

👉 Online Tool Utilized

👉 Documentation & Consistency Emphasis

👉 65 Questions - Literature Search/NARA Review

👉 Mission Relevancy

👉 Policy

👉 Physical

👉 Metadata

👉 Cost / Benefit

Online Appraisal Tool

USGS
science for a changing world

Records Appraisal Tool

[Home](#)

[View an existing record](#)

Insert into Records Appraisal Tool

Directions: Fill out the form. If you are unable to complete the task, that is fine, you may return later to edit when you are ready to save. Once you are done, you may review the results of your form and if you are ready, click "Email" to finish the task.

[Save Progress and Insert New Record](#)

Last Update: **Appraiser:** Collection Name:

Origination Date: (mm/dd/yyyy) Appraisal Completion Date: (mm/dd/yyyy)

Mission Relevancy

Do the records fit within the scope of our Collecting Policy ?	Yes <input type="radio"/> No <input type="radio"/> N/A <input type="radio"/>	Clear Choices <input type="button" value="Clear"/>	Comments: <input type="text"/>
Does the anticipated current and future utility of the data fit within the EROS mission?	Yes <input type="radio"/> No <input type="radio"/> N/A <input type="radio"/>	Clear Choices <input type="button" value="Clear"/>	Comments: <input type="text"/>
Are the records significant or unique to the remote sensing, cartographic, and Earth science data user community?	Yes <input type="radio"/> No <input type="radio"/> N/A <input type="radio"/>	Clear Choices <input type="button" value="Clear"/>	Comments: <input type="text"/>

Appraisal Process Steps

👉 Briefing for Archivist & Project Lead

- 👉 Comprehensive
- 👉 Scientist Feedback
- 👉 Unanswered Questions

👉 Archivist Memo

👉 Recommendation

- 👉 Retain/Accept or Dispose/Not Accept
- 👉 Project Lead Disagreement
- 👉 Senior Management Given Two Weeks for Questions

Appraisal Process Steps

- 👉 Senior Management 'Last Questions' Session
 - 👉 Not a Briefing
 - 👉 10-30 Minutes
- 👉 Vote to Director
- 👉 Director Response
 - 👉 Archivist & Project Lead
 - 👉 Memo or E-Mail Required
- 👉 Action Taken - Retain/Accept or Dispose/Not Accept

Results

👉 Completed 24 Scientific Appraisals

👉 Retain 12

👉 Accept 0

👉 Dispose 10

👉 Not Accept 2

👉 Documentation

👉 Tool Output

👉 Briefings

👉 Memos

Summary

- 👉 Secured Science Buy-In, Then Senior Management
- 👉 Means to Determine Which Records to Curate
- 👉 Justify
 - 👉 Documentation - Justification for Decisions
 - 👉 A Means to Say "No" to Offers
- 👉 Continuing Process Development
 - 👉 DCC's DRAMBORA
- 👉 Online Tool
 - 👉 U.S. National Archives & Records Administration
 - 👉 Library and Archives of Canada