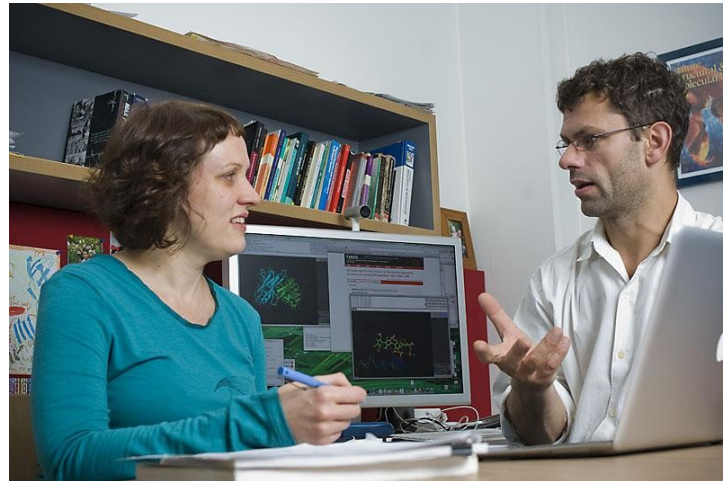
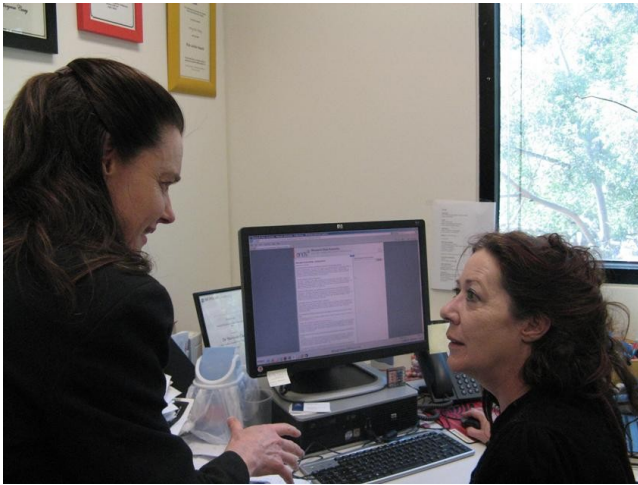




Research data planning: experiences from Monash University

JISC MRD Programme International Workshop, 28-29 March 2011



Sam Searle, Data Management Coordinator
Monash University Library
researchdata@monash.edu
www.researchdata.monash.edu



Overview

- Context – data management in the research environment in Australia
- Introduction to Monash & staffing of the research data management portfolio
- Brief history of Monash data planning activities
- Future directions
- Discussion



Australian research environment

- *Australian Code for Responsible Conduct of Research* (2007) outlines data responsibilities of researchers and their institutions
- Funders (ARC, NHMRC) encourage, but do not mandate, deposit of data into repositories and there is no history of sector archives like AHDS etc.
- Data management plans are not promoted in the Code or funder guidelines (registries / inventories are)
- Strong repositories community due to role in ERA (Oz equivalent of UK RQF) - means libraries are well-placed to get involved

Australian National Data Service

- Funded by the Department of Innovation, Industry, Science and Research - the most significant research data ‘intervention’ in the world (\$72M)
- Monash University (lead), ANU and CSIRO
- Will create/commission data infrastructure, capture descriptions of Australian research data, and build research data management capability – largely through funding institution-based projects
- About 40 staff, and growing
- “More researchers re-using more data more often”

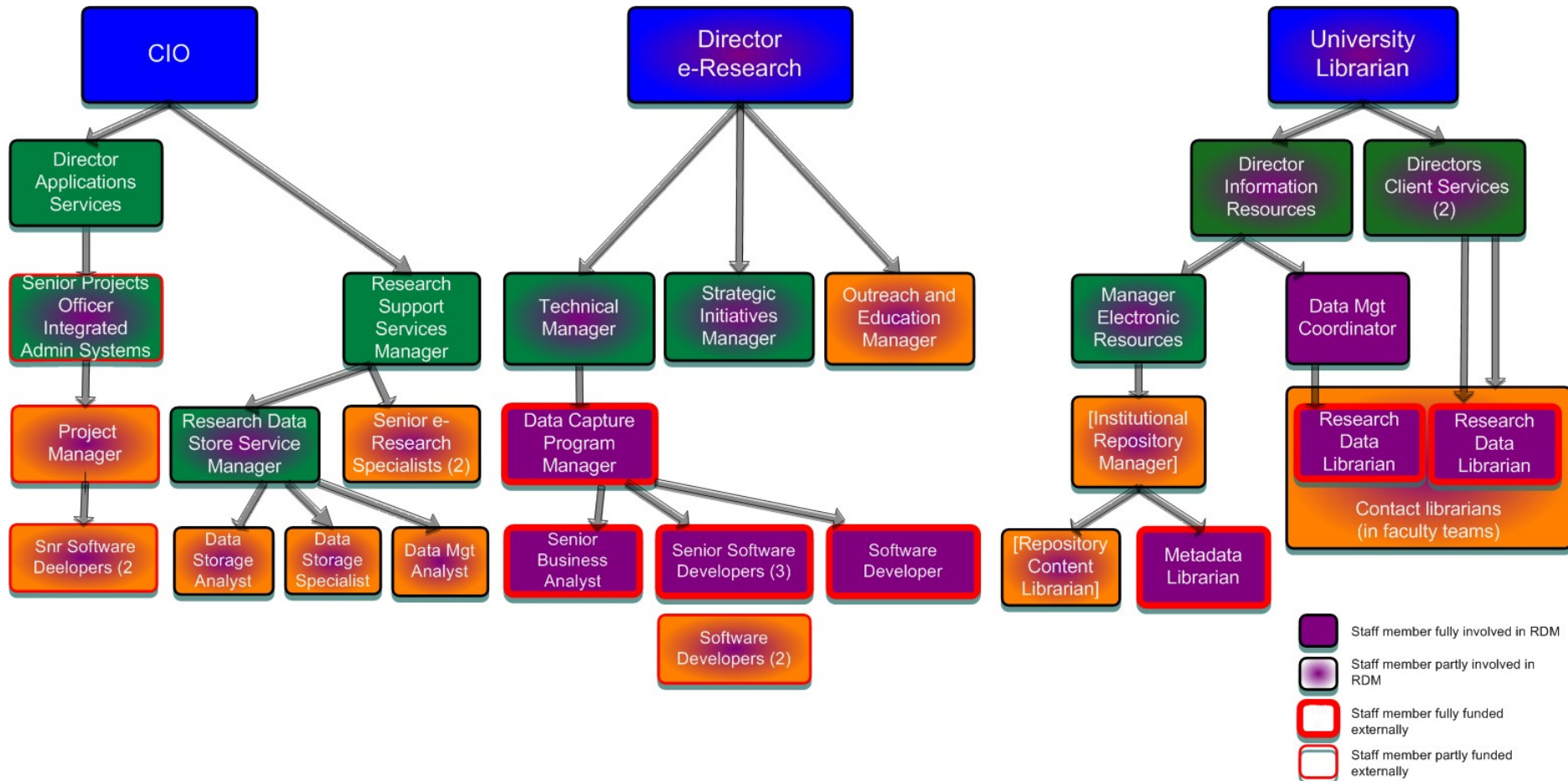


Monash University

- Established 1958
- 10 faculties on six Australian campuses, plus Malaysia, South Africa, and Prato (Italy)
- 59,925 students from more than 100 countries (6.1% of these in higher degrees by research)
- 3,809 academic staff (7,589 total staff)
- Total research income \$221m (~£137m) in 2009
- Strong history of leadership in Australasia in e-research & scholarly communications, including research data management



Research data management staffing





Why the Library?

- Existing relationships with researchers and faculty / unit research managers
- Trusted partner in research
- Staff with relevant transferable knowledge and skills, e.g. interviews, metadata, copyright / IP
- Locus for activities relating to scholarly communication (including open access)
- *But* not just the Library – requires partnerships between many parts of the University (shared governance, referral processes, joint projects)



Monash Library RDM activities

Governance, policy & strategy

- Governance structures
- Policy framework
- Implementation strategies
- Environmental scanning
- Strategic & operational planning
- Infrastructure plans (contribute to)
- Resourcing

Information & advice

- RDM website
- Advice
- Referrals
- Information sessions

Knowledge & skills

- Programs for researchers
- Professional development of Monash Library staff
- Input to library profession and research sector initiatives

Discovery & dissemination

- Disseminate metadata (from Monash & other sources) about research data
- Selectively acquire & publish data
- Authority control, incl. identifiers
- Promote availability of external sources of research data

Improving RDM in practice

- Promote uptake of solutions for storage & management
- Joint RDM improvement projects with researchers
- Data planning interviews / consultations
- Research data planning toolkit

Collaboration & leadership

- Australian National Data Service (ANDS) community
- Other research organisations
- Special interest groups



Data planning timeline - 2007

- Template developed jointly by Library and Monash e-Research Centre and trialled with a small group of researchers
- Findings
 - More education required for researchers on statutory requirements, IP and ownership
 - Need to reduce potential question ambiguity
 - Need to expand to data not created by researchers



2008

- Template revised & used by librarians for 'data interviews' with researchers
- Drew on previous version & work from Purdue and John Hopkins University Libraries in the US
- Outcomes
 - Validated the 2007 findings with more researchers and across a broader range of disciplines
 - More opportunities for Library staff to be involved in research data discussions
 - Prompted a change of approach



Key changes in approach (1)

Previous version/s

Plan = output

Compliance goals

Form, open questions, free text response

Assumed: researcher knows the answers but they are not written down

New version

Planning = a process

Focus on self-assessment and discovery

‘Checklist’, more multi-choice + space for free text

Assumes: some topics may be new to the researcher or not well understood



Key changes in approach (2)

Previous version/s

Stand-alone

Document existing practice

Duplicated existing sources
(e.g. grant proposals, ethics
application)

“Too big”

New version

Links to policies, resources,
services, contacts

Promote best practice

Existing sources attached or
referred to

Probably still “too big” – but a
bit smaller than before

A. OWNERSHIP, COPYRIGHT, INTELLECTUAL PROPERTY (IP)

Copyright protection

1. The data is protected by copyright.
This will apply to most research data.
2. The data will be collected, created or compiled
 - in Australia - Australian copyright applies.
 - outside of Australia.

Complete quickly and easily using multi-choice boxes

KEY DOCUMENTS ON THIS TOPIC

- [Research data management guidelines: ownership, copyright and IP](#)
- [Intellectual Property Framework](#)
- [Statute 11.2 IP and Copyright and IP Regulations](#)
- [Explanatory Memorandum for IP Statute and Regulations](#)
- [Copyright at Monash website](#)
- [Practical Data Management: A Legal and Policy Guide \[national guide\]](#)

Consult the Copyright Advisers or University Solicitors.

Not sure which option applies to you? Follow the links to relevant resources and people who can help

- by:
- the Higher Degree Research Student
Research by Monash HDR student in the normal course of study, which does not fall into any of the other categories below.
 - Monash University
I have assigned IP to the University because it falls into one of the categories prescribed under the Statutes and Regulations.
 - Monash University
Research data are deposited with Monash University and the University is the copyright owner.
 - Some other party
Some other party owns the copyright and IP.
 - Monash University
Monash University owns the copyright and IP.

Attach other documents and add supplementary information to create a more comprehensive data management plan

[Assignment and Licensing](#) (word, 33KB)
Provide a copy of [MRGS IP and Assignment Forms](#) to help clarify ownership of the data.

Provide a reference number or copy of the agreement.

A common example is research funded by a company that wants to retain copyright/IP.



2009 – 2011

- Checklist used to structure 2-hour seminars for higher degree by research students
- Also used for 1-on-1 consultations with students
- ANDS project funding shifted focus for staff interviews from data planning (future collections) to data publication / re-use (existing collections)
- But local policy endorsed in late 2010 requires researchers to consider various issues as part of *planning* early in projects



2011 –

- Planning focus in research data strategy 2011-2015
- Renewed Library focus on data planning rather than retrospective work on collections
- Further professional development of Library staff to support data planning
 - On-the-job - 'buddy system', secondments
 - ANDS-provided training opportunities
- Better tools
 - Investigate DMPOnline
 - Longer-term opportunities to integrate with other systems and workflows



Questions and issues

- Clarity of purpose in institutional context – good practice & cultural change vs compliance
- Evidence base & costs/benefits analysis – do plans actually lead to better-managed data?
- Relative weight of planning and other activities as part of holistic portfolio
- 'Silo' risks - business process ownership, re-use of plan content in other systems and processes
- Granularity and timing – who, what and when?
- Researcher issues – loss of trust, resourcing



Researcher quote (1)

In retrospect it would have been terrific to sit me down at the beginning and say “Let’s talk through your project and the data you will be collecting” This would have been incredibly useful for me. It may not have changed that many things, but it would definitely have clarified my processes.



Researcher quote (2)

We are usually too busy to think about how our data might be re-used at the end of a project.

It would be good if every researcher who received an ARC funded grant attended a session or received an email passing on the information you passed on to me. It would be good to discuss all the issues around data management at the beginning of a project.



More information

- Research data management at Monash
 - www.researchdata.monash.edu
- Research Data Collections Project
 - www.researchdata.monash.edu/collections-project
- RDCP Toolkit – resources for interviewing researchers about their data collections
 - www.researchdata.monash.edu/collections-project/toolkit
- Australian National Data Service
 - www.ands.org.au



This project is supported in part by the Australian National Data Service



ANDS is supported by the Australian Government through the National Collaborative Research Infrastructure Strategy Program and the Education Investment Fund (EIF) Super Science Initiative



Australian Government

**Department of Innovation
Industry, Science and Research**