



transforming
assessment

Models for measuring change: emerging models and consensus building

Gillian Roberts

Glasgow Caledonian Business School

The ripple effect...

Transformation and evaluation
at 3 levels:

- Module
- Department or School
- Institution



The purpose of evaluation

- to help participants build on initial pilots and to refine and extend planned project activities during and after the lifespan of the project (formative evaluation)
- to provide evidence to the funding council and programme management team that funding has been effectively leveraged to support transformational activities (summative evaluation)
- to provide evidence of the benefits of assessment re-engineering to the wider education community (dissemination).

Transformational Change

Evidence includes:

- embedding of project principles in module / departmental / school / institutional strategies
- plans for assessment re-engineering in additional courses or classes not defined in the original proposal
- commitment to training and support for staff engaged in re-engineering activities
- inter-department and faculty-wide dissemination activities

Approaches

- Baseline comparisons
- Process measures - main focus
- Output measures
- Analysis of e-technologies used in REAP

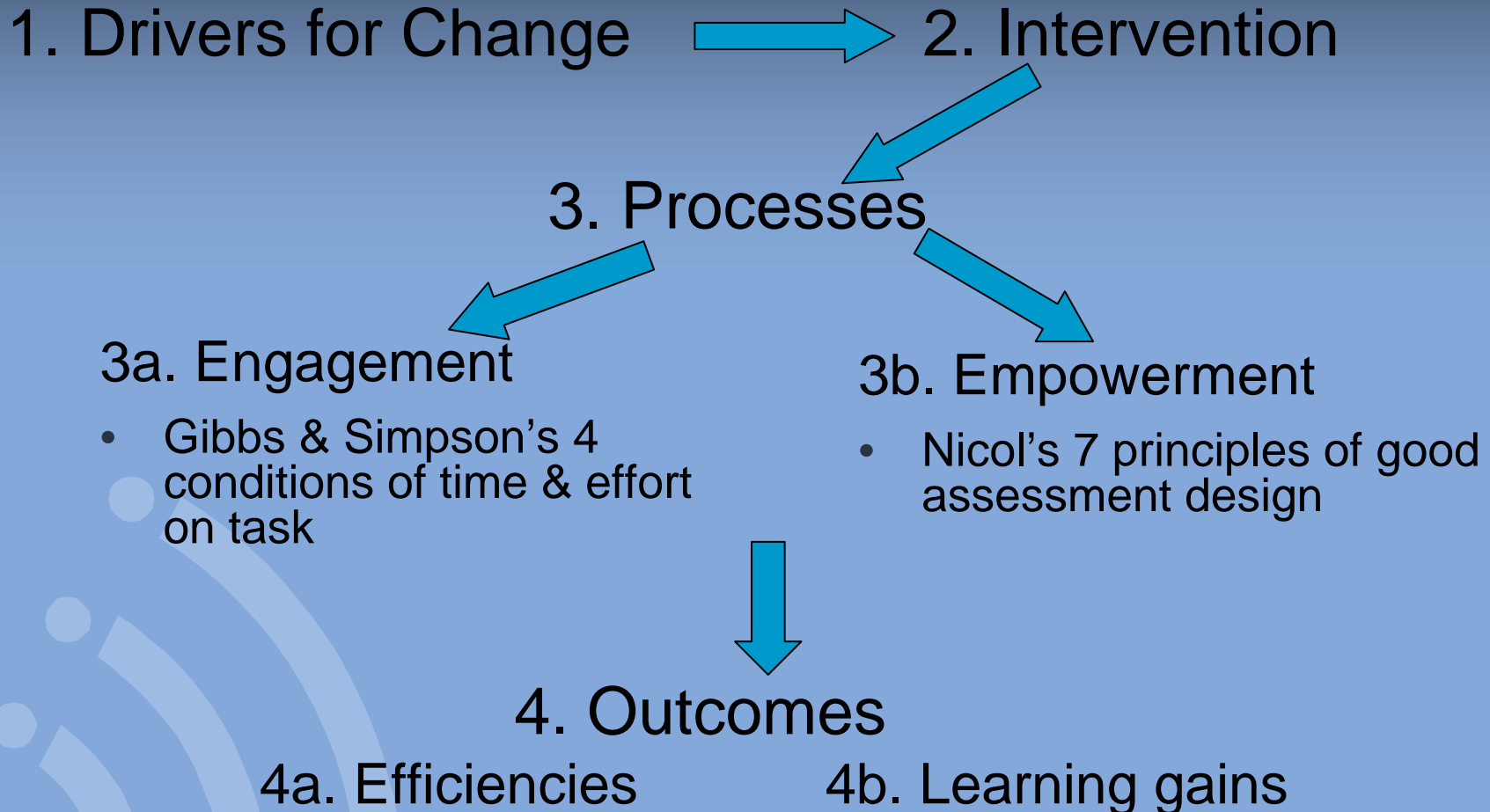
Making your mark...

Examples of Tools:

- Students' Assessment Feedback Experience Questionnaire
- Case Study Analytical Tool
- Twigg's Institutional and Module Readiness Criteria
- MIT 90's model of transformational change
- Scenario Planning



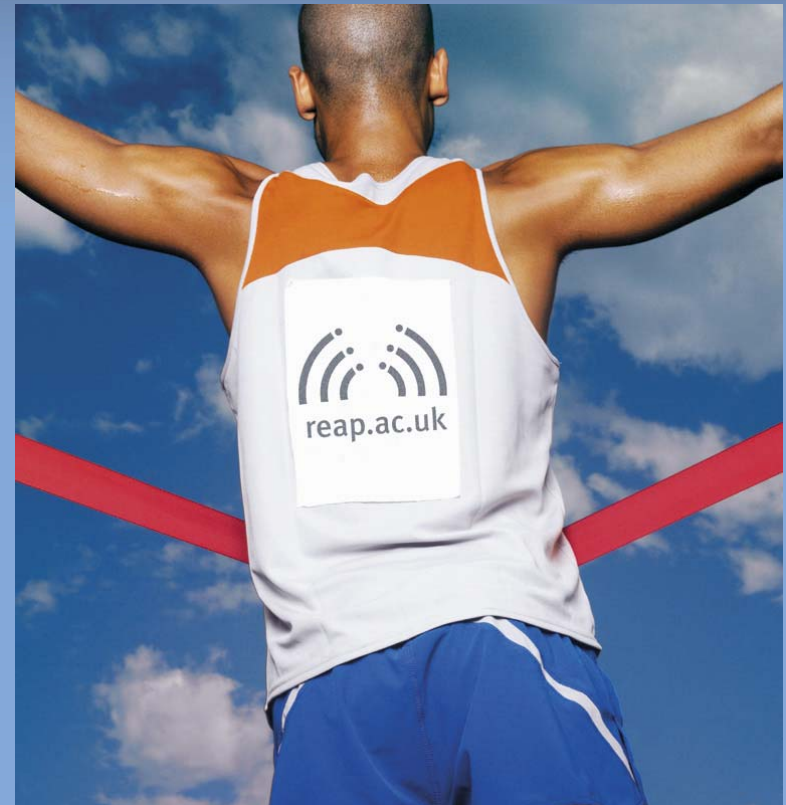
Case study analytical tool



Leading the way...

Analysis of technological tools

- E-portfolio
- Electronic voting system
- Electronic feedback software
- VLE's for peer and self assessment
- PLATO, Turnitin & Ref. Works



Transformational Change

Evidence includes:

- embedding of project principles in module / departmental / school / institutional strategies
- plans for assessment re-engineering in additional courses or classes not defined in the original proposal
- commitment to training and support for staff engaged in re-engineering activities
- inter-department and faculty-wide dissemination activities