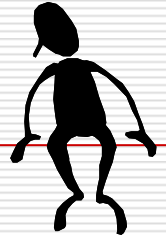


Mobile Placement Learning and Assessment Toolkit

mPLAT



Yvonne Howard

Lester Gilbert

Learning Technologies Group

School of Electronics and Computer Science

University of Southampton

The partners

“The consortium is a well-connected group”

Hugh Davis, ECS, University of Southampton

Lester Gilbert , ECS, University of Southampton

Yvonne Howard , ECS, University of Southampton

David Millard , ECS, University of Southampton

Gary Wills , ECS, University of Southampton

Mary Gobbi, Nursing and Midwifery, University of Southampton

Debra Humphris, Health Care, University of Southampton

Helena Knowles, Nursing and Midwifery, University of Southampton

Balbir S. Barn, Computing, Thames Valley University

Obed Brew, Adult Health, Thames Valley University

Karen Elcock, Adult Health, Thames Valley University

Chris Frost, Learning Support, Bournemouth and Poole College

Judi Philips, Health Care, Bournemouth and Poole College



The problem

- Clinical placements
 - 50% of 3-year course
- Assess the student's competence
- Workload of the supervising practitioner
 - Assessment processes can be fragile
 - Impinge on the students' learning
 - Audit trail inadequate
- Students away from usual learning environment
 - Difficult to access learning resources



The vision

- Practice based learning
- Mentoring process
- Clinical and non-clinical contexts
- Work place assessment integral part of course
- Tools to allow
 - On the spot on-line entry
 - Immediate feedback
 - Instant decisions on follow-up actions
 - Learning resources
 - Social networks
 - Learner support



The toolkit

- Mobile learning toolkit
- Deployment (PCs, PDAs, Smartphones...)
- Flexible interface to
 - Learning outcomes
 - Method of assessment
 - Form of the result
 - How it will be recorded
 - By whom
- Timing of assessment(s)
- Timing of feedback
- Learning resources support learning outcomes
- Actions to be taken



Toolkit architecture

Client

Browser



Infra-structure

Authentication

Authorization

User manager

Toolkit control

Adaptors

Asmt

EA

Rep

PP

App

App

Services

Assmnt
renderer

Enterprise
admin

Repository

Personal
Portfolio

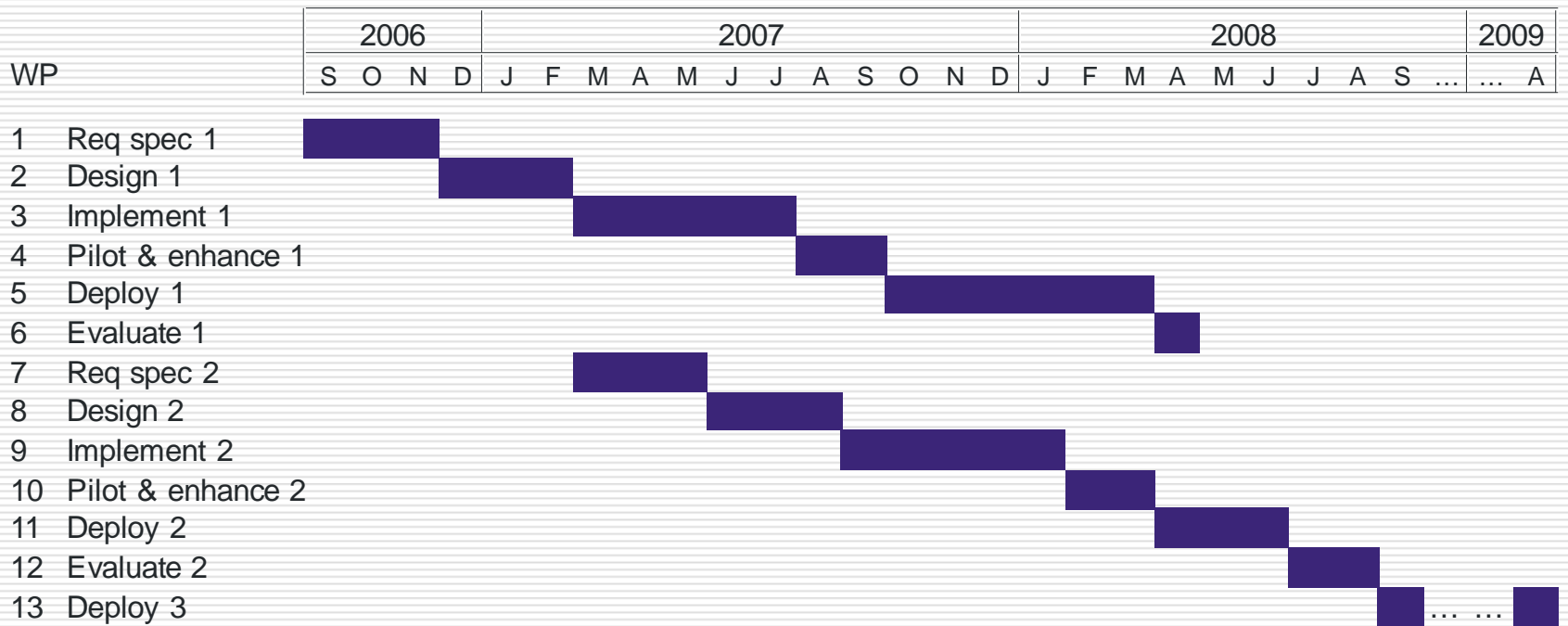
Application
(tool)



Technologies & methodologies

- Use the FREMA reference model to identify services
 - Integrate e-Framework services
 - e.g. r2q2 assessment rendering and response service
 - Integrate web 2 tools
 - Co-design with practitioners
 - Agile
 - Early, iterative tool delivery
 - Evaluation and feedback into co-design for next deliverable
-

Work plan



Thank you

Questions, comments, discussion...

