



DAME

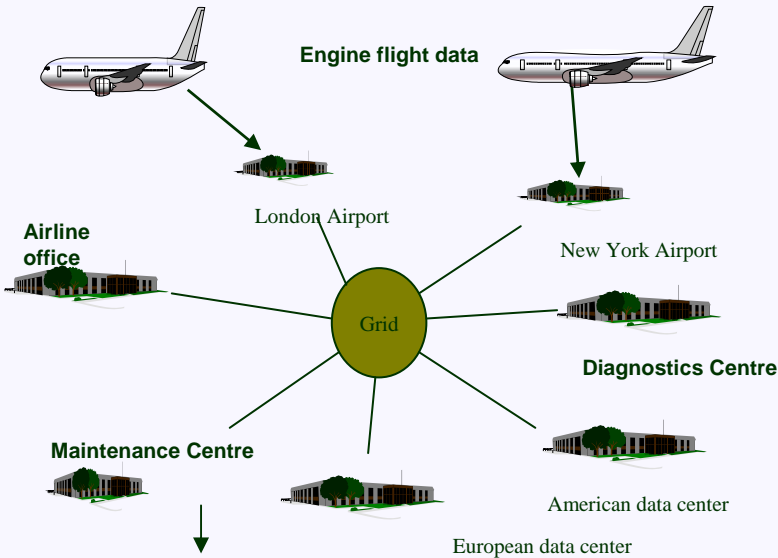
Jim Austin
University of York
& CEO Cybula Ltd

Overview

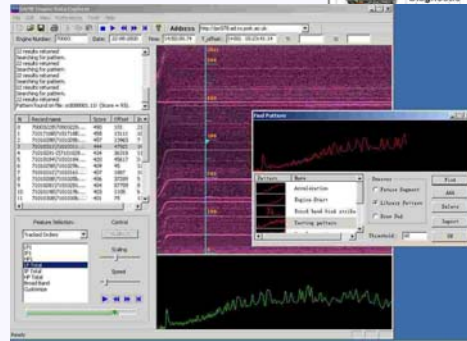


- What did you expect to build?
- What did you end up building?
- Level of infrastructure achieved (e.g. in terms of maturity)
- Is your infrastructure being used by the project, beyond, etc?
- How is it being sustained?
- Lessons learnt about sustainability

What we expect to build



DAME: Grid based tools and Infer-structure for Aero-Engine Diagnosis and Prognosis



XTO

Engine Model

Case Based Reasoning

Signal Data Explorer

Roles



■ Universities

- York – pattern matching
- Leeds - middleware
- Sheffield - CBR
- Oxford – front end data analysis and preparation

■ Companies

- Rolls-Royce - user
- DS&S – data provider
- Cybula – exploitation route

What did you end up building?



■ Main differences

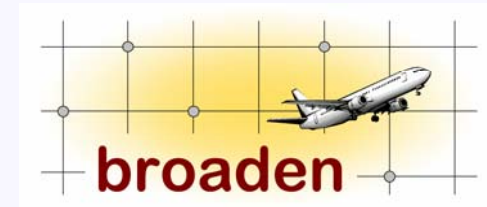
- Did not operate in flight – ground based
- Less integration with existing systems than we hoped
- Most was achieved

Level of infrastructure achieved
(e.g. in terms of maturity)

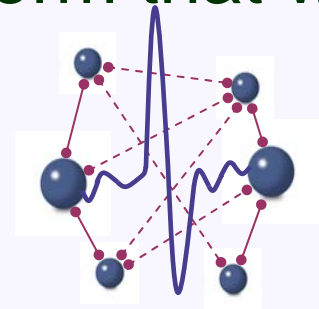


■ We achieved

- A demonstration system on real data
- Good enough for Rolls-Royce to support a follow on project – BROADEN



- We have a stable middleware platform that we then applied in CARMEN



Is your infrastructure being used by the project, beyond, etc?



- Tools – Signal Data Explorer (SDE)
 - We developed SDE which is now being used:
 - In CARMEN – neuroscience tools and data sharing
 - In BROADEN and in Rolls-Royce
 - We exploited SDE through Cybula Ltd.
 - Being used on trains
 - Started to sell out of the box system

Is your infrastructure being used by the project, beyond, etc?



- Tools – Case Based Reasoning (CBR)
 - Some attempts to exploit through commercial partners
 - Developed in house by Rolls-Royce through taking on one of the RA's.
- Tools – Quick data analysis
 - Oxford developed existing Quick technology and continue to take to market through Oxford Biosignals.

Is your infrastructure being used by the project, beyond, etc?



■ Middleware

- SDE, PMC being used in CARMEN
- Valuable understanding of Globus, SRB helped later deployment in White Rose Grid and in CARMEN and BROADEN

Lessons learnt about sustainability



- Don't depend on one company to take up technology
- Universities should be easy on small exploitation companies
- Note - not open source approach
- Take time to take technology to market
- The DTI (TSB) follow on is a great bridge
- Keep the team together!

