

JISC Conference 2010

Research to Practice...

The case study of the University of Leicester

Professor Gilly Salmon &

The Beyond Distance Research Alliance Team



European Foundation for
Quality in E-Learning:
UNIQUE Award Winner



ALT Learning
Technologist of the Year:
Team Award 2009



About the University >>>
 Study with Us >>>
 Our Research >>>
 Business Services >>>
 News & Events >>>
 Alumni and Supporters >>>

“Elite without being elitist...”


Times Higher Education
Winners Brochure

Request a Prospectus >
 January 2010 Examinations - Adverse weather >
 120 New Research Studentships >
 Outstanding student support >

THE UNIVERSITY OF THE YEAR 2008/9

Request a Prospectus >
 Current Students and Staff >
 Academic Departments >
 Library >
 Job Vacancies >

Copyright Disclaimer




“LEADING INNOVATION, IN TEACHING & LEARNING”



13/04/2010

Gilly Salmon



Benefits: Learning Innovation...

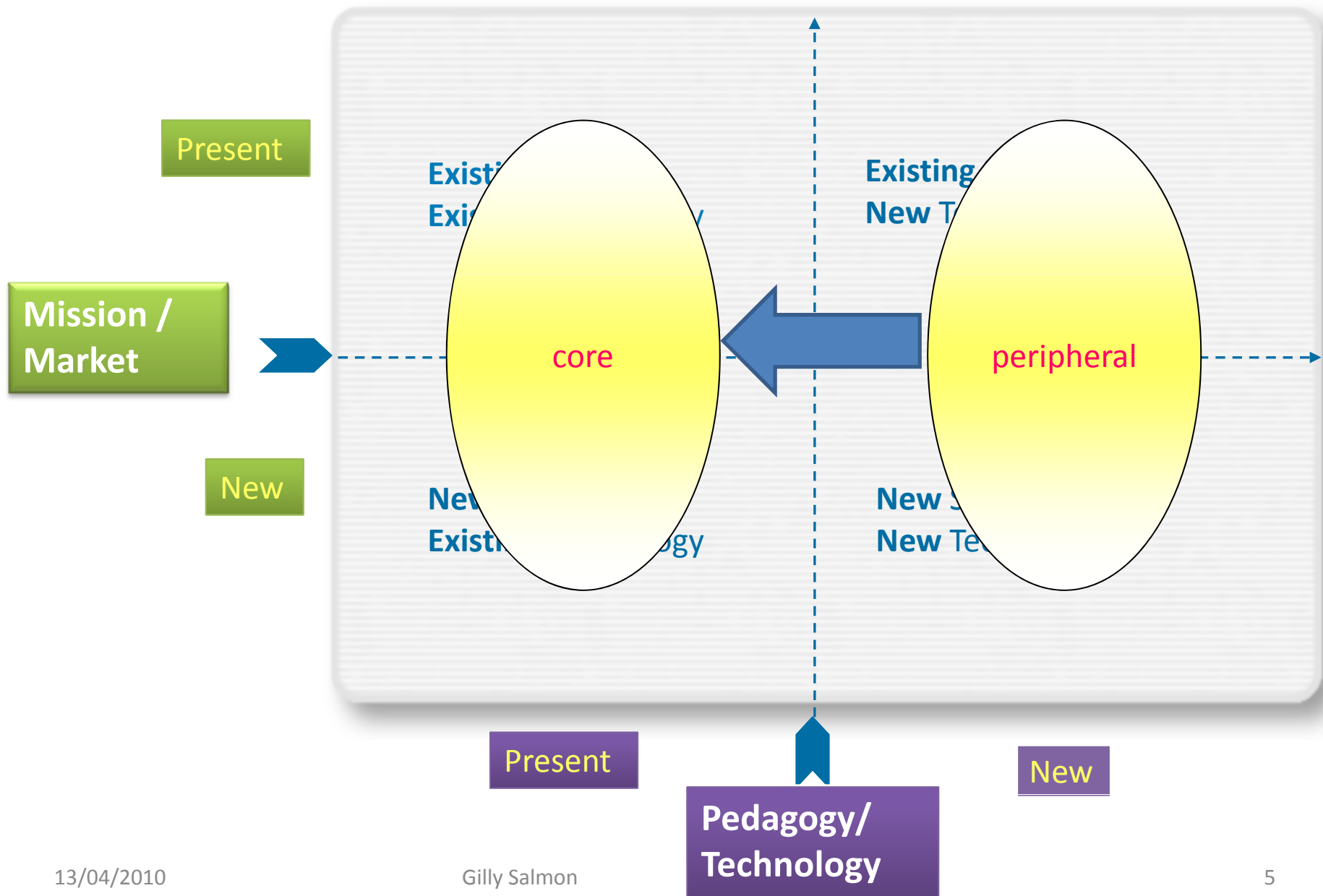
- Drive change from the **students' learning experience**, including equivalent experiences for those studying at a distance. Quality of changes judged this way
- Keep Leicester 'ahead' as an **innovative** university,
- Create **organisational** flexibility

Implementing Innovation...

- Ownership within academic departments
- Creation of learning (rather than “buying-in to strategy”)
- Change based on research (not targets)

development

research



www.le.ac.uk/mediazoo

Innovation Video:

<http://www2.le.ac.uk/departments/beyond-distance-research-alliance>

Media Zoo in Second Life:

<http://www.youtube.com/watch?v=y7TMOzzFFdQ>



On Second Life:
The Media Zoo

Creating the Future- together

The Learning Futures Academy is a community of scholars with focus on envisioning and preparing for the future of learning,
across all education levels
for every training need.

Beyond Distance research projects inform, shape, and demonstrate models to influence future learning.

The Learning Futures Academy welcomes discussion and collaboration with learning futures scholars around the world.

www.le.ac.uk/futurelearn

Thank you for listening

Markers on the horizon:

- Learner voice, partnerships & contributions
- Relationship between 3D Virtual Environments & real world
- Renaissance for voice: iTunes, voiceboards, podcasts
- Open Educational Resources
- Greening of learning



Gilly.salmon@le.ac.uk