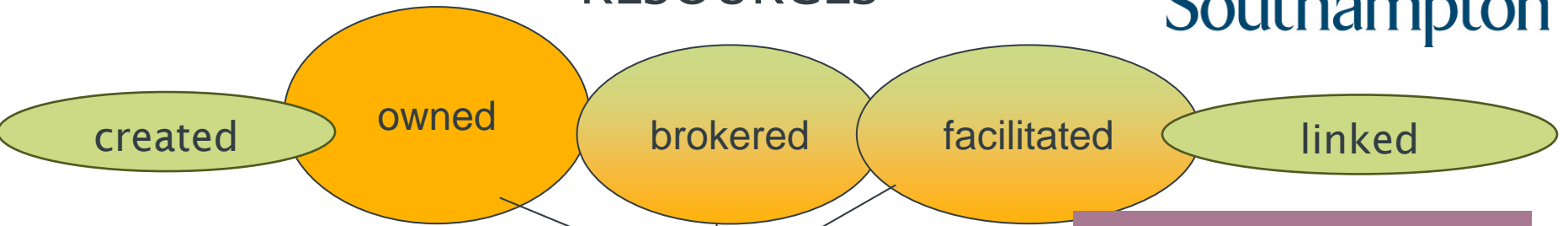


Data liberation/aggregation and Discovery to Delivery agenda

Mark Brown University Librarian
SCONUL/JISC LMS Meeting 27 June 2008

RESOURCES



Contextualise
Aggregate
Personalise
Create

INFORMATION
MANAGEMENT

Search
Select
Seek

INTERFACE

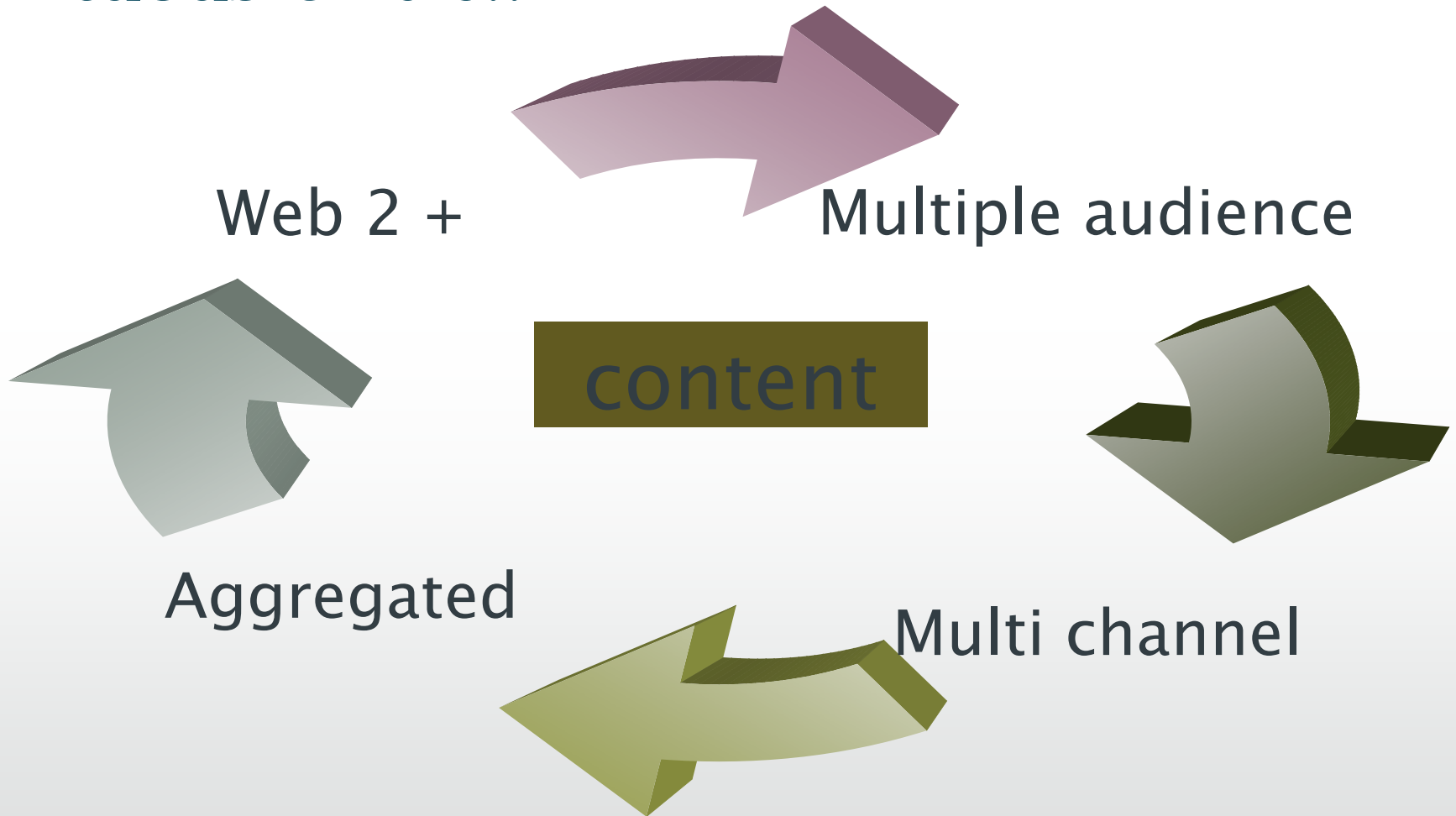


E -ACCESS
ILL
VISIT
NETWORK



DELIVERY

Virtuous Circle..



- Users expect search, navigate and locate information on Google/ Web 2.0 model.
- Libraries see ‘liberating’ range of accessible content to the widest possible audience as a way to redefine their role as key information brokers, managers, developers and facilitators.
- Vendors are starting to respond to these trends by developing interoperable ‘add-on’ D2D services built around core functionality but system independent.
- The market for integrating D2D is already ‘busy’ with global providers such as Google Scholar and WorldCat, and local web and portal services.

Assets and Gaps for the LMS

Assets

- Track record for internal library systems integration
- Sunk cost and system investment
- Growing range of 'add-on' modules

Gaps

- Web 2.0 applications
- Integration with external systems and services
- Federation vs aggregation

Uncertain Future?

Primary
Integrator
For D2D



Wait
&
See



Backroom
Functions



JISC/SCONUL INITIATIVE

Local

- Will many libraries still need a LMS to manage low ‘owned’ content in the future?
- Is the LMS ‘total solution’ suitable to support multi-audience, multi-level, multi-channel search and discovery?
- Do LMS solutions offer new opportunities for delivery or are they too focused on discovery?

National

- How do the LMS providers contribute to the development of an integrated national resource discovery service?