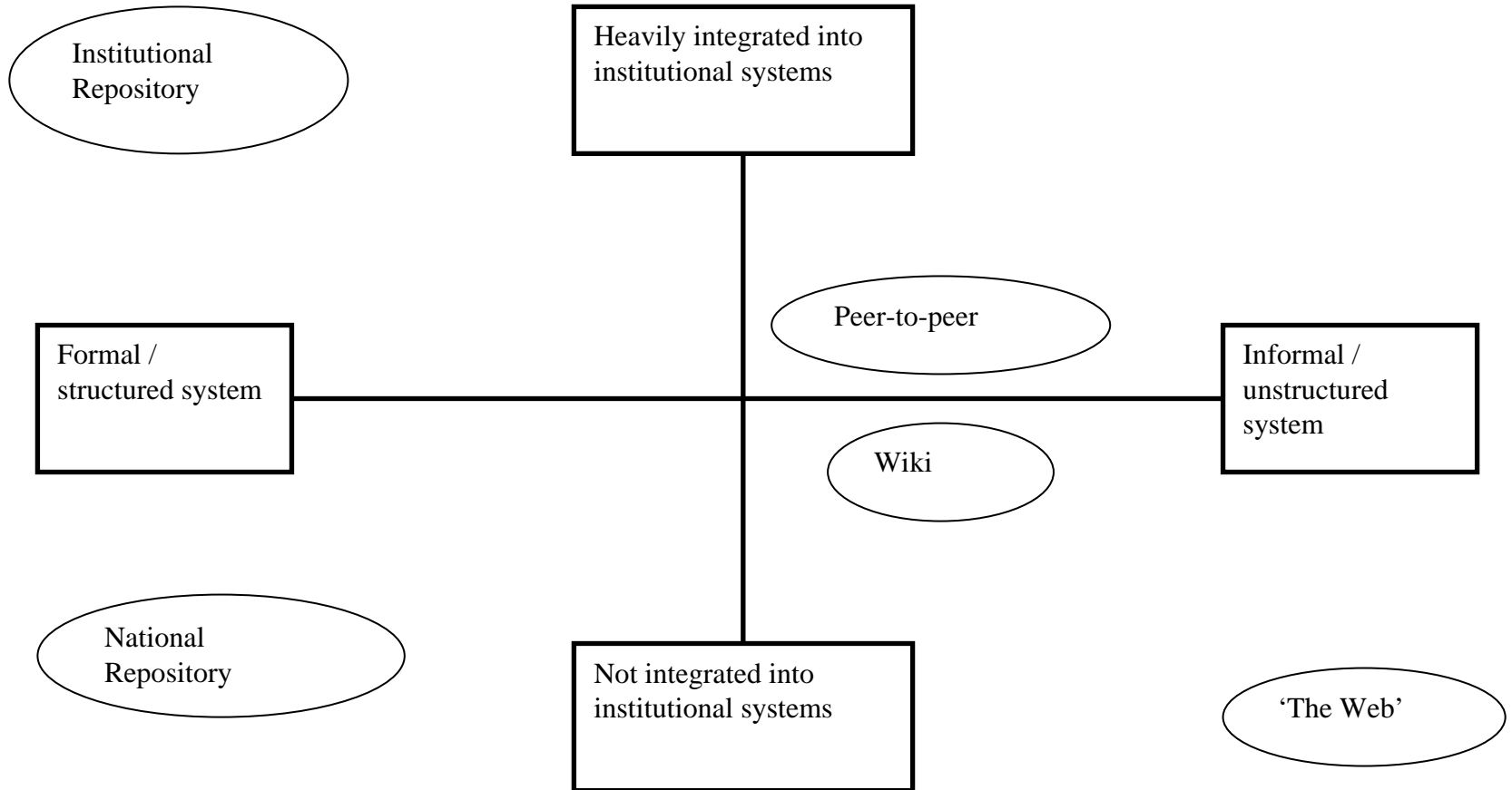


Sharing e-learning resources



E-learning strand

1. **Repositories** – formal systems – short presentations and questions
2. **Informal sharing** – short presentations and questions
3. **Teaching and learning** – attitudes to sharing – presentations and discussion
4. **Embedding** – panel session and discussion
5. **Your views** – what do you think your institution should do

Developing Repositories at Worcester

- ▶ to develop an open integrated e-collections **service**
- ▶ to include learning and teaching e-resources as well as research and publications
- ▶ To include librarian and support staff services and guidance

- ▶ WRaP: Worcester Research and Publications
- ▶ Based on Eprints
- ▶ Started March 2007 with early adopters
- ▶ Research publications, project reports . . .
- ▶ PhD Theses
- ▶ Eager response from staff

- ▶ Based on CoRE from City College Coventry
- ▶ Developed as part of JISC WM-Share project
- ▶ Slow response from tutors

E-learning repository development

- ▶ Target teams and specialist groups
- ▶ Output from local projects
- ▶ Sharing for courses with partner colleges
- ▶ Add collections of external resources
- ▶ Student undergraduate dissertations

- ▶ Separate from VLE
- ▶ Resources linked from VLE, from blogs, wikis, emails, Word documents, web pages . . .
- ▶ Indirect access for students
- ▶ Direct access for staff only
- ▶ Wider sharing encouraged if everyone uses a central system

Extending and Embedding the University Repository Service (DRaW)

1. Covers both learning and teaching materials and research/publications
2. Hope that familiarity with WRaP will encourage a culture of contributing to e-collections
3. Create a comprehensive repository service for the university and the wider academic community